

SCOUT - Logger

The **SCOUT** offers the unique combination of high performance, ruggedness and ease of use appreciated by logging operators worldwide.

It supports all tools implementing ALT protocol including MSI/ALT tools with QL Telemetry and optimized for use with the 2nd generation acoustic and optical televiwers – collecting data at baud rates up to 500,000 bps.



Key benefits

- USB interface, runs on any PC compatible notebook.
- Windows operating system platform.
- Wireline and winch flexibility-runs on coax, mono-or multi-conductor wireline.
- High speed up hole telemetry system and automatic telemetry tuning.
- Improved telemetry performance on long single and multi-conductor wirelines when used in conjunction with the latest generation of ALT/MSI tools. New Equalizer and Train processes.
- Totally software controlled using Logger Suite software. Real Time Data display and printing.
- Very easy to use, with graphical user interface, self-diagnostic features, configurable through files, minimal user input required.
- Shaft encoder flexibility - compatible with any 12V or 5V shaft encoder.
- Robust heavy duty system, fault tolerant.
- Preferred solution for customer looking for light weight high performance equipment.

Technical specifications

- **Dimension (W x L x H)** 17 x 31.5 x 12.5 cm
7 x 12.4 x 4.9 in
- **Weight** 3.5 Kg
- **Input Voltage** 90-240 VAC, 50-60 Hz
inverter compatible
- **Tool Power** 120 V / 500 mA
- **PC Connection** High Speed USB
- **Logging Cable** Standard single, four, seven conductor and coax
- **Tools / Telemetry** ALT protocol including MSI/ALT tools with QL Telemetry
- **Upgradeability** User upgradeable firmware
- **Software** Logger Suite V 12.1 or later

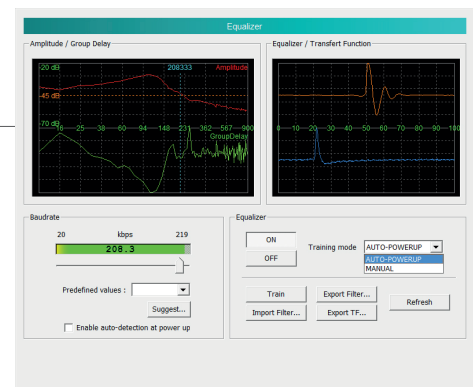
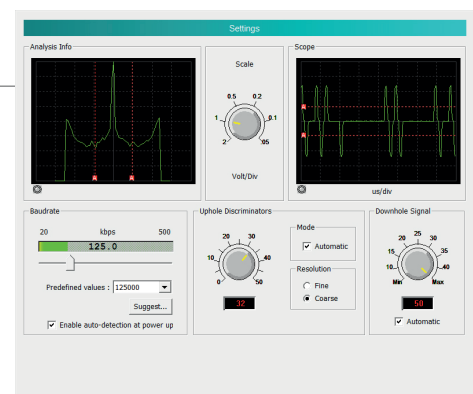
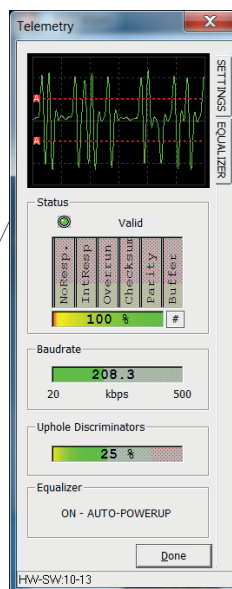
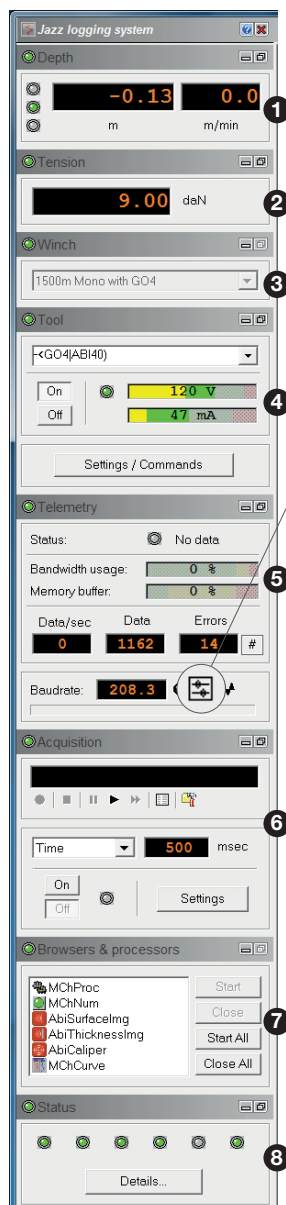
SCOUT - Logger

Logger suite software

Logger suite software is compatible with all ALT/MSI data loggers. The software is easy to use and the interface is conform to the MS Windows standard.

The heart of the graphical user interface is **the dashboard**, the operators control panel to select and control all system functions, monitor the data acquisition process and observe the logging tool status. The dashboard consists of multiple threads running concurrently and handling specific system tasks simultaneously.

The dashboard provides access to the following windows :

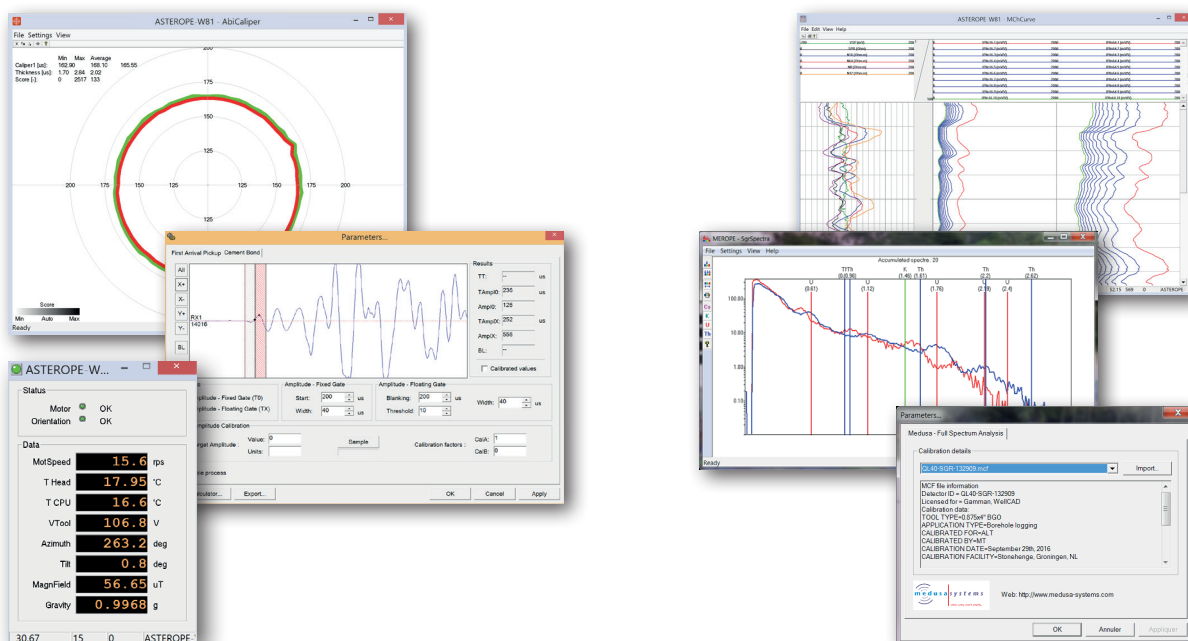
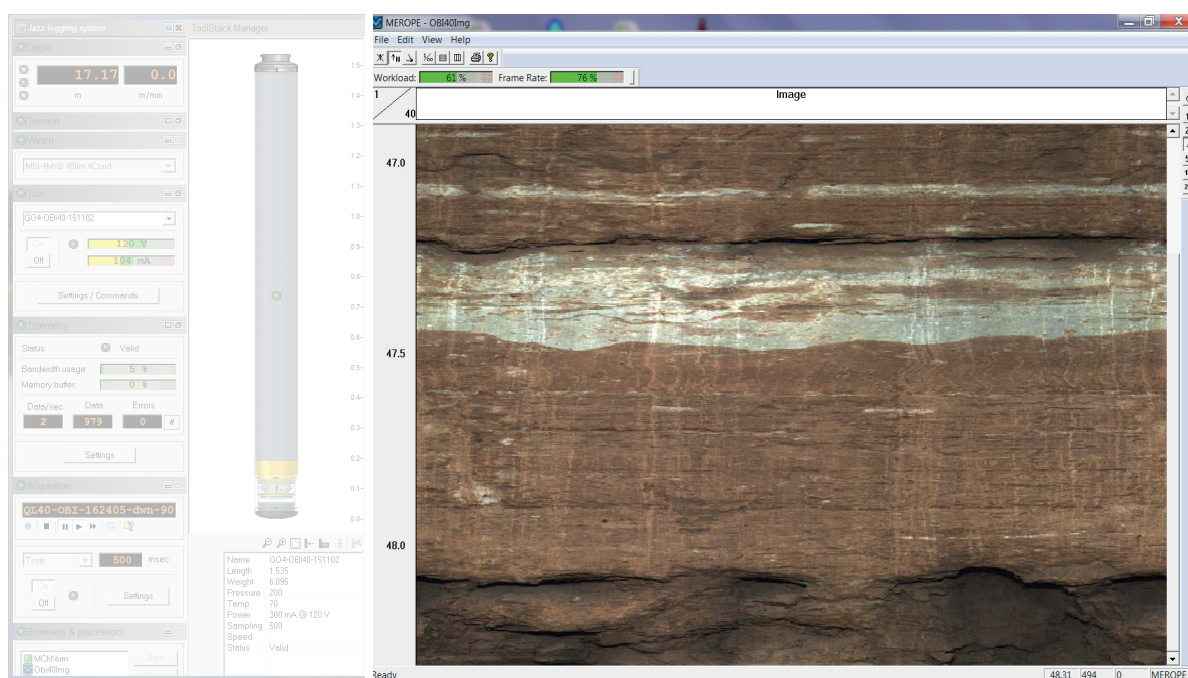


- 1 Depth control
- 2 Wireline weight indicator display
- 3 Winch selection
- 4 Tool configuration and power control
- 5 Advanced tool settings telemetry control and tuning
- 6 Data sampling record and replay control
- 7 Data browser and processor control windows
- 8 System status display

Full Automatic Telemetry Tuning and "Equalizer/Train" options for higher telemetry performance on long single and multi-conductor wirelines.

SCOUT - Logger

Browser windows are used for real time data monitoring and offer a wide choice of display and printing options for conventional curves, full waveform sonic traces, acoustical and optical borehole images. A header editor is available to provide sophisticated log headers with graphics. Special processors can be activated and configured for real time processing.

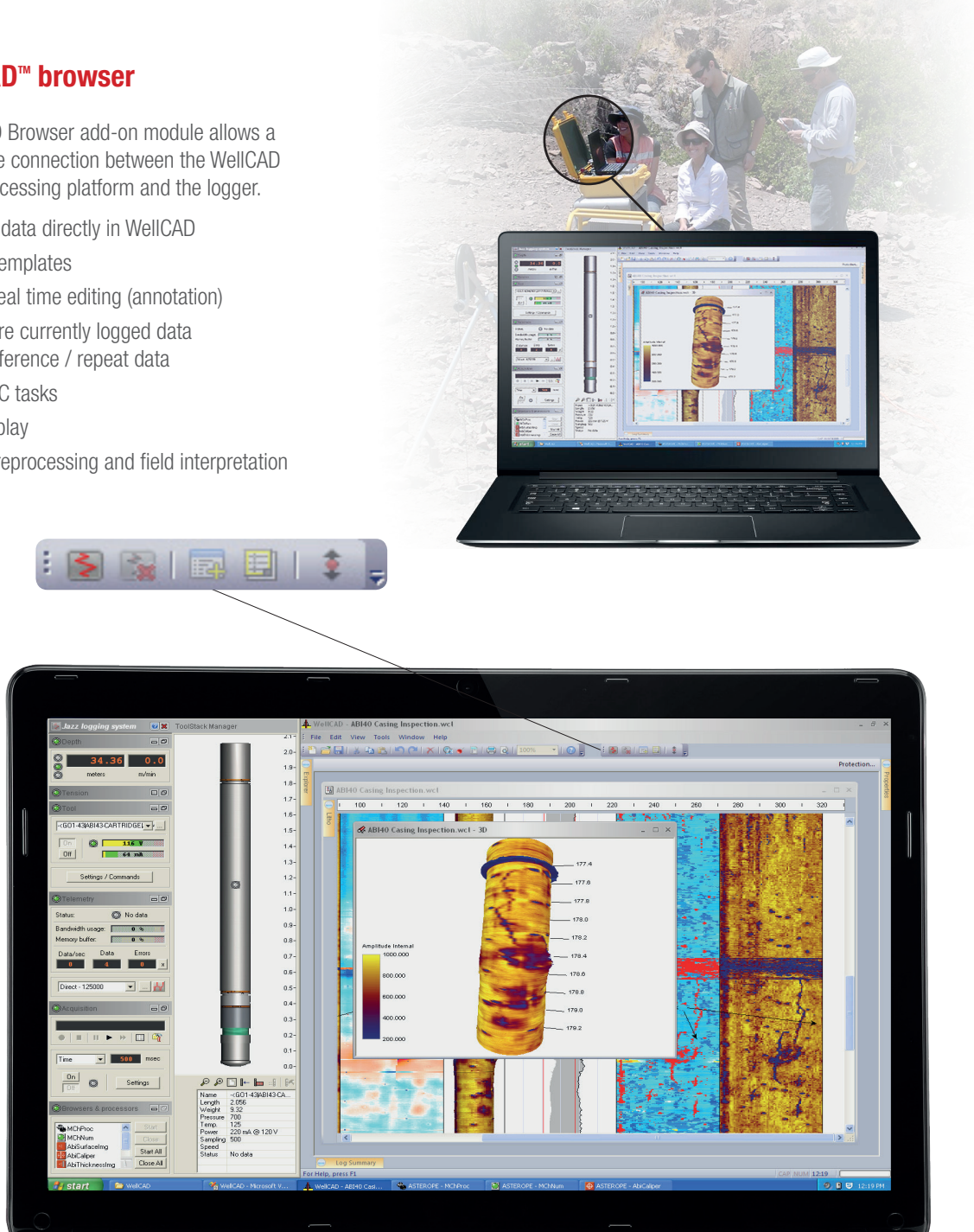


SCOUT - Logger

WellCAD™ browser

WellCAD Browser add-on module allows a real-time connection between the WellCAD data processing platform and the logger.

- collect data directly in WellCAD
- apply templates
- allow real time editing (annotation)
- compare currently logged data with reference / repeat data
- QA / QC tasks
- 3D display
- data preprocessing and field interpretation



In this example, the operator is able to monitor the realtime scrolling log, view any or all other logs while monitoring all the log outputs, including depth. Optionally raw sensor data may be displayed. Comparison with main & repeat section, scrolling and adding annotations while data acquisition continues.

Log curve scale and other presentation parameters may be adjusted while logging.